



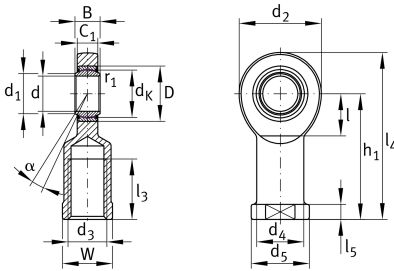
GIR45-UK-2RS-A

Rod end

Schaeffler ID:
0066466030000

Rod end with internal thread, maintenance-free, sliding layer: ELGOGLIDE, DIN ISO 12240-4, dimension series E, type F, inner ring curved surface with hard chromium coating, sealed, right hand thread

Technical information



Main Dimensions & Performance Data

d	45 mm	Bore diameter bearing
D	68 mm	Outside diameter bearing
B	32 mm	Width inner ring
C_r	360,000 N	Basic dynamic load rating, radial
C_{0r}	259,000 N	Basic static load rating, radial
	2.7 kg	Weight

Dimensions

d_K	60 mm	Ball diameter
d_1	50.7 mm	Outer flange diameter inner ring
d_2	102 mm	Outer eye diameter
d_3	M42x3	Thread size
d_4	58 mm	Shank diameter
h_1	145 mm	Shank Length Internal thread head
C_1	27 mm	Width of the rod end
α	7 °	Tilt angle
l_3	65 mm	Thread length Internal thread
l_4	196 mm	Total length internal thread head
l_5	20 mm	length rod end shank
l_7	52 mm	Distance drilling with/shaft start
d_5	70 mm	Shank diameter, large
W	60 mm	Width Across Flat
G_r	0 - 0,06 mm	Radial Clearance
d_{OT}	0 mm	Bore diameter bearing, upper tolerance
d_{UT}	-0.012 mm	Bore diameter bearing, lower tolerance
B_{OT}	0 mm	Width inner ring, upper tolerance
B_{UT}	-0.12 mm	Width inner ring, lower tolerance

Mounting dimensions

r_{1smin}	0.6 mm	Edge Spacing
-------------	--------	--------------

Temperature range

T_{min}	-30 °C	Operating temperature min.
T_{max}	130 °C	Operating temperature max.